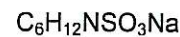
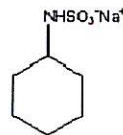


TECHNICAL SPECIFICATIONS

SODIUM CYCLAMATE ANHYDROUS POWDER E – 952

Formula:



Natrium-Cyclamat

E 952
CAS 139-05-9
EINECS 205-348-9

Chemical Name:	Sodium N-cyclohexylsulphamate
Relative Molecular Mass:	201.2
Aspect:	Odourless white powder
Taste:	Very sweet
Appearance of Solution:	Clear and colourless
Identification:	A. I.R. spectrophotometry. B. Reaction of sodium
Solubility:	Soluble in water, 20% at 20°C and 90% at 80°C; 4% propylene glycol. Slightly soluble in alcohol, practically insoluble in chloroform and ether
Loss on Drying:	< 1 %
Content:	98.5 – 101.0 %
pH (Solution 10 % in Water):	5.5 – 7.5
Absorbance at 270 nm:	< 0.1
Sulphates:	< 1.000 ppm

Specification SODIUM CYCLAMATE ANHYDROUS POWDER E - 952

Heavy Metals (as Lead):	< 10 ppm
Lead:	< 1 ppm
Selenium:	< 30 ppm
Arsenic:	< 3 ppm
(1) Cyclohexylamine:	< 8 ppm (Eur.Ph. < 10 ppm)
(1) N, N-dicyclohexylamine:	< 0.5 ppm (Eur.Ph. < 1 ppm)
(1) N, N'-dicyclohexylsulfamide:	< 1 ppm (Not limited by Eur.Ph.)
(1) Aniline:	< 0.5 ppm (Eur.Ph. < 1ppm)
Sulphamic Acid:	< 1000 ppm
(1) Microbiology:	(Not limited by Eur.Ph.)
Total Aerobic Mesophilic Bacteria:	< 100 cfu/g
Total Coliform Bacteria:	Absence / 0.1 g
Salmonella spp.:	Absence / 25 g
Mould and Yeast:	< 100 cfu/g
(1) Residual Solvents:	(Eur.Ph. < 2170 ppm)
Xylene:	< 1 ppm
Shelf life:	Five Years

(1) Limit of the European Pharmacopoeia: higher or not defined

PURITY conform to European Pharmacopoeia 5th edition (2005), and European Directive 95/31/EC

USE according to the European Directive 94/35/CE and subsequent modifications, and any other applicable regulations.