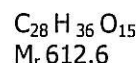
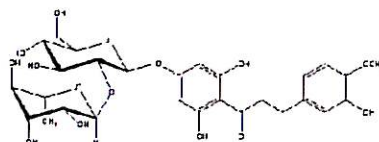


TECHNICAL SPECIFICATIONS

NEOHESPERIDINE DC Pharm. Eur.

Formula:



Neohesperidin DC

E 959

CAS No.: 20702-77-6

EINECS No.: 243-978-6

Appearance:

white or yellowish-white powder having a characteristic intense sweet taste

Solubility:

practically insoluble in water, freely soluble in dimethyl sulfoxide, soluble in methanol, practically insoluble in methylene chloride.

Identification:

IR spectrum	see monograph
Examination of HPLC profile	see monograph
Appearance of solution	see monograph
Related substances	see monograph
Assay (HPLC):	96.0 – 101.0 %
Water (Karl Fisher):	max. 12.0 %
Sulphated Ash:	max. 0.2 %
Heavy Metals:	max. 10 ppm

Microbiological analysis:

Total Plate Count:	max. 1000 cfu/g
Mould and Yeast:	max. 100 cfu/g
E. Coli:	Absence / g
Salmonella:	Absence / 25 g

Neither GMOs nor any material produced from GMOs is used in the production process of NHDC according to the "GMO" and "Produced from GMO" definitions laid down in Directive 2001/18/EC and EC Regulation 1830/2003.